

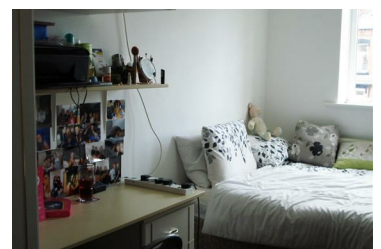


**Pennington Court, Delph Lane, Leeds, LS6 2RW**  
**£85 Per Person Per Week**  
**Available from 1st July 2021**



DELUXE BILLS INCLUDED!! SUPERFAST 350MB BROADBAND, GREEN GAS & ELECTRICITY, WATER, TV LICENSE, CONTENTS INSURANCE, GARDENING AND MORE! Three bedroom flat within a few minutes walk of the corner of University of Leeds campus and great fast transport links to the city center.

- DOUBLE BEDROOMS
- CLOSE TO SHOPS
- BURGLAR ALARM
- CLOSE TO UNI
- DOUBLE GLAZING



0113 816 0131  
[info@sugarhouseproperties.co.uk](mailto:info@sugarhouseproperties.co.uk)

1st floor, 21 Otley Road, Headingley, Leeds LS6 3AA  
[www.sugarhouseproperties.co.uk](http://www.sugarhouseproperties.co.uk)

[/sugarhouseproperties](https://www.facebook.com/sugarhouseproperties)  
[@Sugarhouseleeds](https://www.instagram.com/Sugarhouseleeds)